

# MEW CHOPPER 150 - 4000 D

# MEW CHOPPER 150 - 4000D

## WELDING GENERATORS FOR OUTDOOR WELDING APPLICATIONS AND POWER SUPPLY

### Technical data

Power source	MEW CHOPPER 150	MEW 2000 G	MEW 3000 D	MEW 4000 D
Engine	Honda	Honda	Ruggerini	Lombardini
Output, hp/rpm	6,8/4000	11,5/3000	20,5/3000	26/3000
Number of cylinders	1	1	2	2
Cubic capacity	190 cc	377 cc	954 cc	1250 cc
Cooling system	Air cooled	Air cooled	Air cooled	Air cooled
Start system	Recoil	Recoil	Electric	Electric
Dimensions, LXWXH	420x360x480	870x520x592	1220x660x750	1410x840x850
Weight	34 kg	130 kg	445 kg	465 kg
<b>DC welding</b>				
Duty cycle 100%	-	140 A	250 A	300 A
Duty cycle 60%	150 A	170 A	300 A	350 A
Duty cycle 35%	-	-	300 A	400 A
Current range	30-150 A	20-170 A	30-300 A	30-400 A
Open circuit voltage	65 V	65 V	75 V	70 V
Electrode diameter, max.	3.25 mm	4 mm	6 mm	8 mm
<b>Generator</b>				
3 x 400 V AC	-	6 kVA/50Hz	10 kVA/50Hz	13 kVA/50Hz
1 x 230 V AC	2 kVA	4 kVA/50Hz	5 kVA/50Hz	7 kVA/50Hz
dBA at 7 m	74	73	69	67
Fuel tank capacity/time	3.6 l/3,5 h	6.5 l/3,5h	23 l/9 h	26 l/8 h

Elektrode cable	16 mm <sup>2</sup>	25 mm <sup>2</sup>	35 mm <sup>2</sup>	50 mm <sup>2</sup>
3 m	80511603	80512503	80513503	80515003
5 m	80511605	80512505	80513505	80515005
10 m	80511610	80512510	80513510	80515010
15 m	80511615	80512515	80513515	80515015

Earth cable	16 mm <sup>2</sup>	25 mm <sup>2</sup>	35 mm <sup>2</sup>	50 mm <sup>2</sup>
3 m	80501603	80502503	80503503	80505003
5 m	80501605	80502505	80503505	80505005
10 m	80501610	80502510	80503510	80505010
15 m	80501615	80502515	80503515	80505015

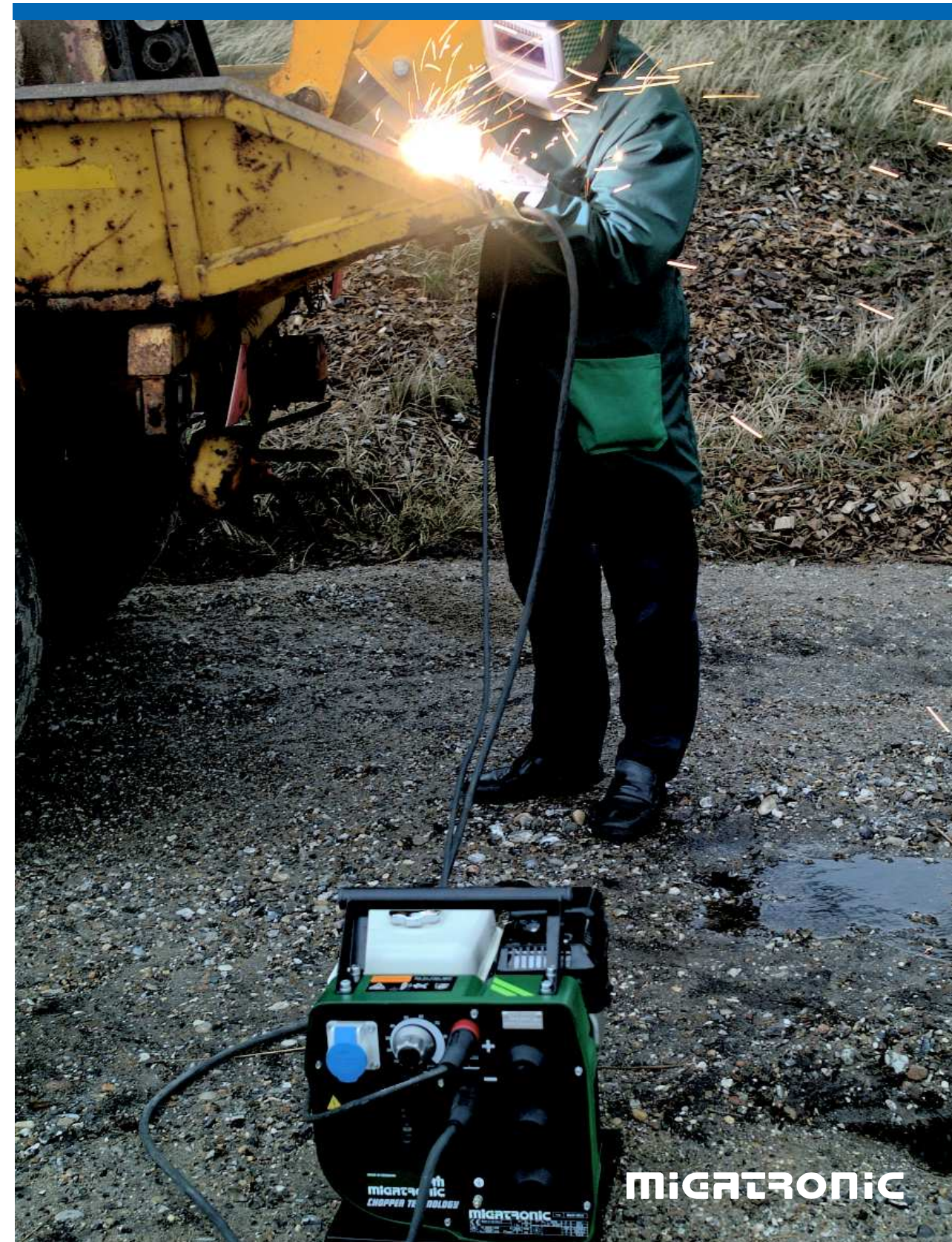
**England:**  
MIGATRONIC WELDING  
EQUIPMENT LTD  
21 Jubilee Drive, Belton Park,  
Loughborough  
Leicestershire LE11 5XS - UK  
Tel: (+44) 01509/267499  
Fax: (+44) 01509/231959  
Service department:  
(+44) 01509/211492

**Svejsemaskinefabrikken  
Migatronik A/S**  
Aggersundvej 33, Postboks 206  
DK-9690 Fjerritslev, Denmark  
Tel: (+45) 96 500 600  
Telefax: (+45) 96 500 601  
Homepage: www.migatronik.com



**MIGATRONIC**

52173008 C



High-performance generators

Independent power supply

230V and/or 400V outlet

Minimum maintenance

Operational safety

Robust construction for outdoor applications

**MIGATRONIC**

# Migatronc welding generators for outdoor welding applications and power supply

## Why MEW?

Migatronc and Europe's leading manufacturer of welding generators cooperate in offering a range of high-performance and super silenced engine driven welding generators for outdoor applications.

All machines meet new and stringent noise level and eco standards and the selection of globally used engine types provides for a worldwide after sales service.

## MEW Chopper 150

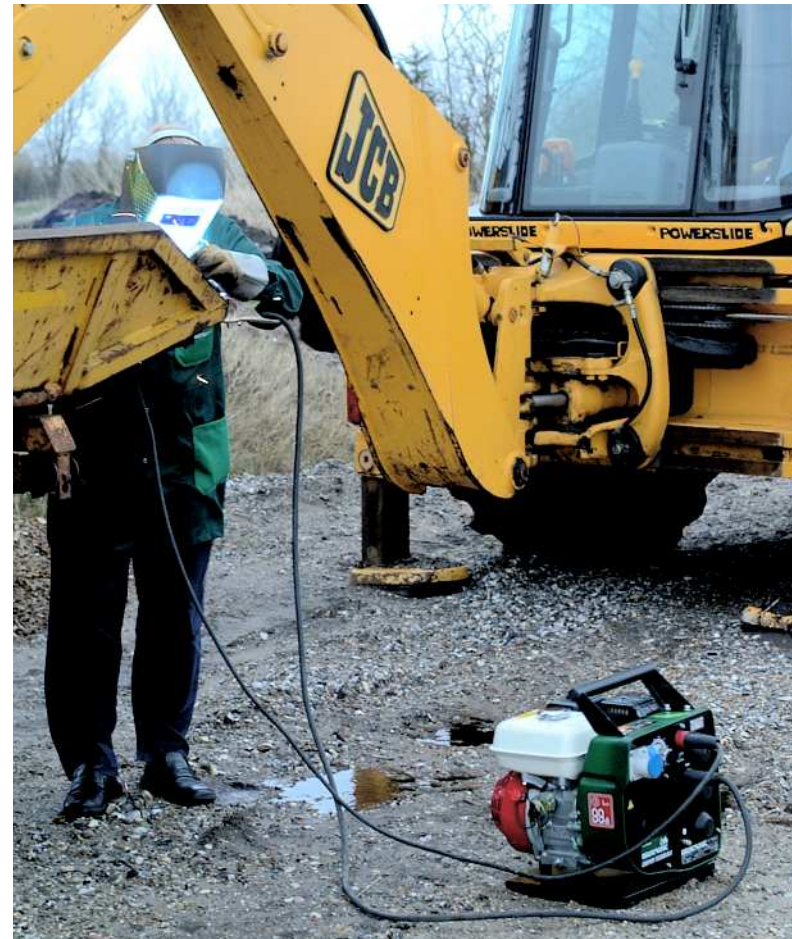
A small and "portable" (34 kilograms) petrol powered 150A DC welding generator for welding with most types of electrodes up to 3.2 mm. The machine is able to power supply "tool-safe" electric tools and lamps consuming up to 2kW/230V.

The MEW Chopper 150 is powered by a Honda GX 200 industrial engine with low fuel level alarm and shut-down of revolutions after a short time without current consumption.

## Other options

In addition to the welding generators displayed in this brochure we are able to supply other sizes and types on request, such as power generators for the supply of mono-phase or three-phase alternating voltage for pumps, compressors and other large generating plants or emergency power plants combined with fastnet installations.

On request some diesel machines can be supplied with other engine makes, such as Deutz, Yanmar and Perkins.



## MEW 2000 G

Compact and high-performance 170A petrol powered welding generator for supply of high-quality welding current and electric tools with 230V AC. The MEW 2000 G is equipped with 12V outlet for emergency starting of industrial vehicles, tractors, excavators, pumps, etc.

If the MEW 2000 G is used as power supply, blue and red CEE plugs will supply up to 4kW/230V or 6kW/400V. The MEW 2000 G is equipped with a modern Honda OHV engine featuring new technique and high performance in every way. The machine can be supplied with trolley and different kinds of remote control.



asynchronous generator can supply three-phase and mono-phase auxiliary current (3 x 400 V/10 KVA and 1 x 230 V/5 KVA).

Tow-bar and wheels are standard features, while site/road towing is an optional feature. The machine weighs 445 kilograms.

## MEW 3000 D

Compact 300 A super silenced DC welding generator for welding with electrodes up to 6 mm, including cellulose electrodes.

The machine is powered by a modern Ruggerini diesel engine with electric starter and features electronic control of the welding current. During welding the

## MEW 4000 D

Compact 400 A super silenced DC welding generator for welding with electrodes up to 8 mm, including cellulose electrodes.

The machine is powered by a modern Lombardini diesel engine

with electric starter and features electronic control of the welding current. During welding the asynchronous generator can supply three-phase and mono-phase auxiliary current (3 x 400 V/13 KVA and 1 x 230 V/7 KVA).

Tow-bar and wheels are standard features, while site/road towing is an optional feature. The machine weighs 465 kilograms.

MEW 3000 D and 4000 D are displayed in green colour but supplied in our partner's original colour (red enamel).

## SPECIALS

- Silenced according to stringent European standards
- Eco-friendly engines
- Low fuel consumption
- High-quality welding
- No extra costs for electric installations
- Easy to transport

